



A Safe Fleet Brand

MANSAVER BAR

MOUNTING INSTRUCTIONS

Models

MSA110 ManSaver Bar; MSA120 Platform Bar; MSA300 Bench Seat Bar; MSA406 and MSA410 Aerial Bars

Overview

The ManSaver is spring loaded so that it always returns to a horizontal position. There are no hooks to latch or harnesses to buckle. To enter, push the ManSaver in or up. To exit, simply lift it.

The ManSaver is made of aluminum extrusion and aluminum bronze castings thereby making it rust proof. It is covered with a heavy layer of foam and a tough rip-stop vinyl outer covering.

The ManSaver must be attached to a strong surface or sturdy support. Each bar is supplied with dependable, heavy-duty, grade-8 mounting bolts.

Installation

Ensure that the mounting area is strong enough to absorb the loads that the ManSaver bar will impose upon it. A reinforcing plate (1/4" thick minimum) is recommended to brace the mounting area.

ManSaver bars can be mounted to the left or right. Ensure that the bar is oriented correctly so that it opens to the up and in positions. (Bench Seat bars will only open up.)

1. Measure and mark mounting location for drilling mounting holes. (Refer to drawing on page 2.)
2. Drill four 3/8" holes for the mounting bolts.

Note: Ensure that the bolts reach a minimum depth of 5/8" into the mounting block portion of the ManSaver bar.

3. Place bar (and wedges and reinforcing plate if used) in position (ensure that the bar is oriented correctly so that it opens to the up and in positions) and secure with four bolts.

For kits that use the rail bracket option:

1. Place the bracket in position and tighten the four bracket bolts.
2. Place the bar in position (ensure that the bar is oriented correctly so that it opens to the up and in positions) and secure with the four bolts.

FIRE RESEARCH CORPORATION

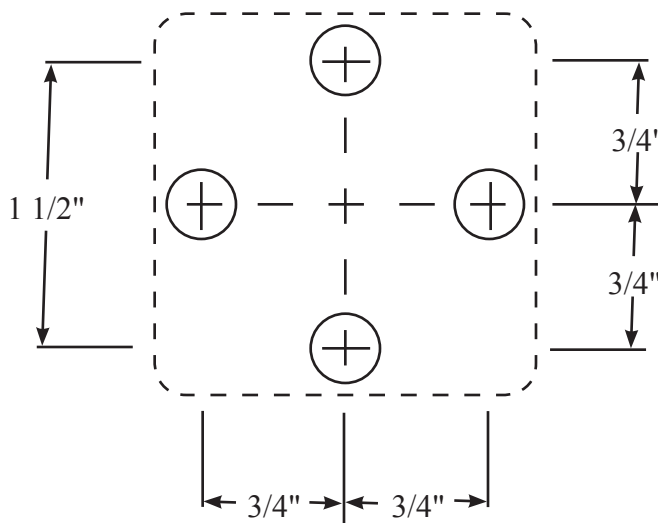
www.fireresearch.com

26 Southern Blvd., Nesconset, NY 11767

TEL 631.724.8888 FAX 631.360.9727 TOLL FREE 1.800.645.0074

Bolt Hole Pattern

Drill 3/8" diameter holes. Ensure that the mounting area is strong enough to absorb the loads that the ManSaver will impose upon it.



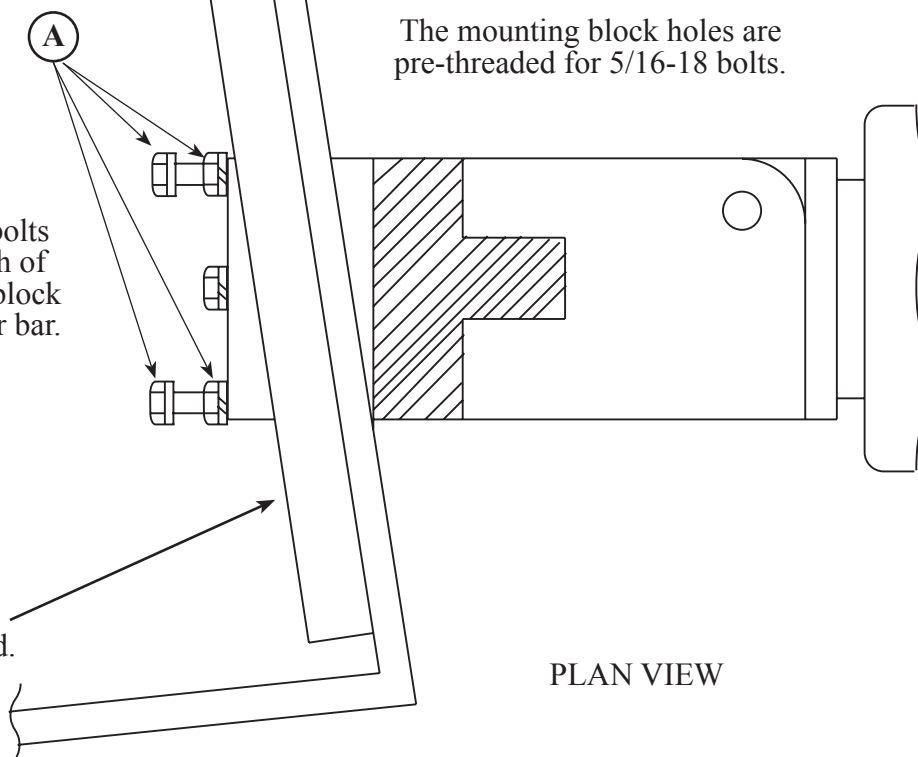
Reinforcing plate
(1/4" thick minimum)
is recommended.

Adjust bolts to engage mounting
block (shaded area) to a maximum
depth of 3/4", minimum 5/8". If
necessary, use locknuts ("A"
in diagram) to secure assembly.

Note: Ensure that the bolts
reach a minimum depth of
5/8" into the mounting block
portion of the ManSaver bar.

The mounting block holes are
pre-threaded for 5/16-18 bolts.

Drawing is shown
with wedges installed.



PLAN VIEW